

Orthex Group

# KITCHEN

Catalogue 2-2019



**GastroMax**<sup>™</sup>  
orthex<sup>™</sup>



# ORTHEX GROUP

Practical is beautiful

Orthex Group is the leading Nordic producer of household products with over 100 years of experience. We are proud to offer a broad assortment of products that are high quality, safe and functional. Our brands are strong, well-known and actively marketed. All our plastic products and over 90 % of all products are manufactured in Sweden and Finland.





# GastroMax™ SMARTER EVERYDAY COOKING

At GastroMax we've spent the last 100 years designing straightforward and durable kitchenware that simplifies your life. Smart solutions that don't make a fuss. They stand by your side to help you make the most of your time and efforts - everyday.



## SUSTAINABLE SOLUTIONS

Our products and services are created to be sustainable at the core and we are continuously optimizing our production processes to reduce environmental impact.

## NORDIC DESIGN

Our design language is born from our Nordic values and Scandinavian heritage – always centred around human needs with the ambition to blend form and function.

## POWERED BY PROFESSIONALS

Ever since the start over 100 years ago, we have collaborated with kitchen professionals to ensure our products are designed and tested to meet the demands of everyday life - as well as being safe to use.





GastroMax™

# FOOD STORAGE

Airtight GastroMax food storage containers seal in the taste and keep food fresh for longer. Lunch boxes in just the right size for your leftovers help reduce food waste.

NEW!



The smallest size is ideal for a portion of salad dressing and fits inside the large containers.

GastroMax™

# FOOD STORAGE

The new compact sizes from 0,5 dl to 1 liter are ideal for storing leftovers and packing lunch to work or school.



**Food storage round w/strap**

12x12x12,2 cm

790503 ○ 790504 ●



**Food storage rectangle w/strap**

16,5x12,5x12 cm

790505 ○ 790506 ●



The adjustable carrying strap fits both round and rectangular containers.



**Food storage container 0,3 L**

12x12x4,5 cm

79210 ○ 792039 ●



**Food storage container 0,45 L**

12x12x6,5 cm

79310 ○ 793039 ●



**Food storage container 0,6 L**

12x12x8,5 cm

79410 ○ 794039 ●



**Food storage 4 x 0.5 dl**

5,5x5,5x10 cm

79110 ○ 791039 ●



**Food storage container 0,5 L**

16,5x12x5x4,5 cm

79510 ○ 795039 ●



**Food storage container 0,8 L**

16,5x12,5x6,5 cm

79610 ○ 796039 ●



**Food storage container 1 L**

16,5x12,5x8,5 cm

79710 ○ 797039 ●



GastroMax™

# FOOD STORAGE

This GastroMax range offers airtight and modular food storage for the pantry and the fridge. All the containers are dishwasher proof, lunch boxes are also microwave and freezer proof. Fresh and functional!



**Lunch box 0,3 L**  
12,5x9,5x4,5 cm  
7831010 ○



**Lunch box 0,45 L**  
12,5x9,5x6 cm  
7833010 ○



**Lunch box 0,6 L**  
18x12,5x4,5 cm  
7832010 ○



**Lunch box 1 L**  
18x12,5x7 cm  
7834010 ○

Great size for nuts  
and seeds.



**Dry food keeper 0,8 L**  
12,5x9x10 cm  
7722010 ○

Great size for pasta  
and rice.



**Dry food keeper 1,6 L**  
12,5x9x20 cm  
7725010 ○



**Dry food keeper 2,25 L**  
12,5x9x28 cm  
7726010 ○

Great size for cereals  
and flours.



**Dry food keeper 3,5 L**  
18x12,5x20 cm  
7728010 ○

GastroMax™

# FOOD STORAGE

The modular freezer boxes nest to save storage space and stack to optimize freezer organization – even the different sizes together.



**Freezer box 1,2 L**  
24x12x6,5 cm  
805039 (2x1,2 L) ●



**Freezer box 0,3 L**  
12x12x4 cm  
801039 (6x0,3 L) ●



**Freezer box 0,5 L**  
12x12x6,5 cm  
802039 (5x0,5 L) ●



**Freezer box 0,75 L**  
12x12x9,5 cm  
803039 (4x0,75 L) ●



**Freezer box 1 L**  
12x12x12,4 cm  
804039 (3x1,0 L) ●



GastroMax™

# FOOD STORAGE



**Lunch box 1,2 L**

23x15,5x5,5 cm

1760010 ○ 1760006 ●



**Lunch box 1,1 L**

18x18x7 cm

11410 ○ 114039 ●



**Lunch box 1,75 L**

18x18x10 cm

11510 ○ 115039 ●



**Lunch box 2,1 L**

29x19x7 cm

116039 ●



**Food keeper round**

**0,75 L** 16x16x10 cm

150039 ●



**Food keeper round**

**1,5 L** 19x19x11 cm

151039 ●



**Food keeper round**

**2,5 L** 23x23x13 cm

152039 ●



Fits 1 kg of sugar or 500 g of cacao.

**Dry food keeper**

**1 L** 18x9x13 cm

10110 ○



Fits 1 kg of rice or 500 g of macaroni.

**Dry food keeper**

**1,5 L** 18x9x19 cm

10210 ○



Fits 2 kg of flour or 1 kg of oatmeal.

**Dry food keeper**

**3,5 L** 21x11x25 cm

10310

The GastroMax vacuum flasks have excellent heat retention. They keep drinks and soups warm in the winter and cool in the summer. All the flasks come with a 10 year guarantee.



**Sarek vacuum flask 0,5 L**

7x7x27 cm  
1453090 ○



**Sarek vacuum flask 0,7 L**

9x9x38 cm  
1454090 ○



**Sarek vacuum flask 1 L**

10x10x28 cm  
1455090 ○



**Sarek vacuum flask 0,75 L**

11x11x20 cm  
1400090 ○



**Sarek vacuum flask 1,2 L**

11x11x28 cm  
1411090 ○

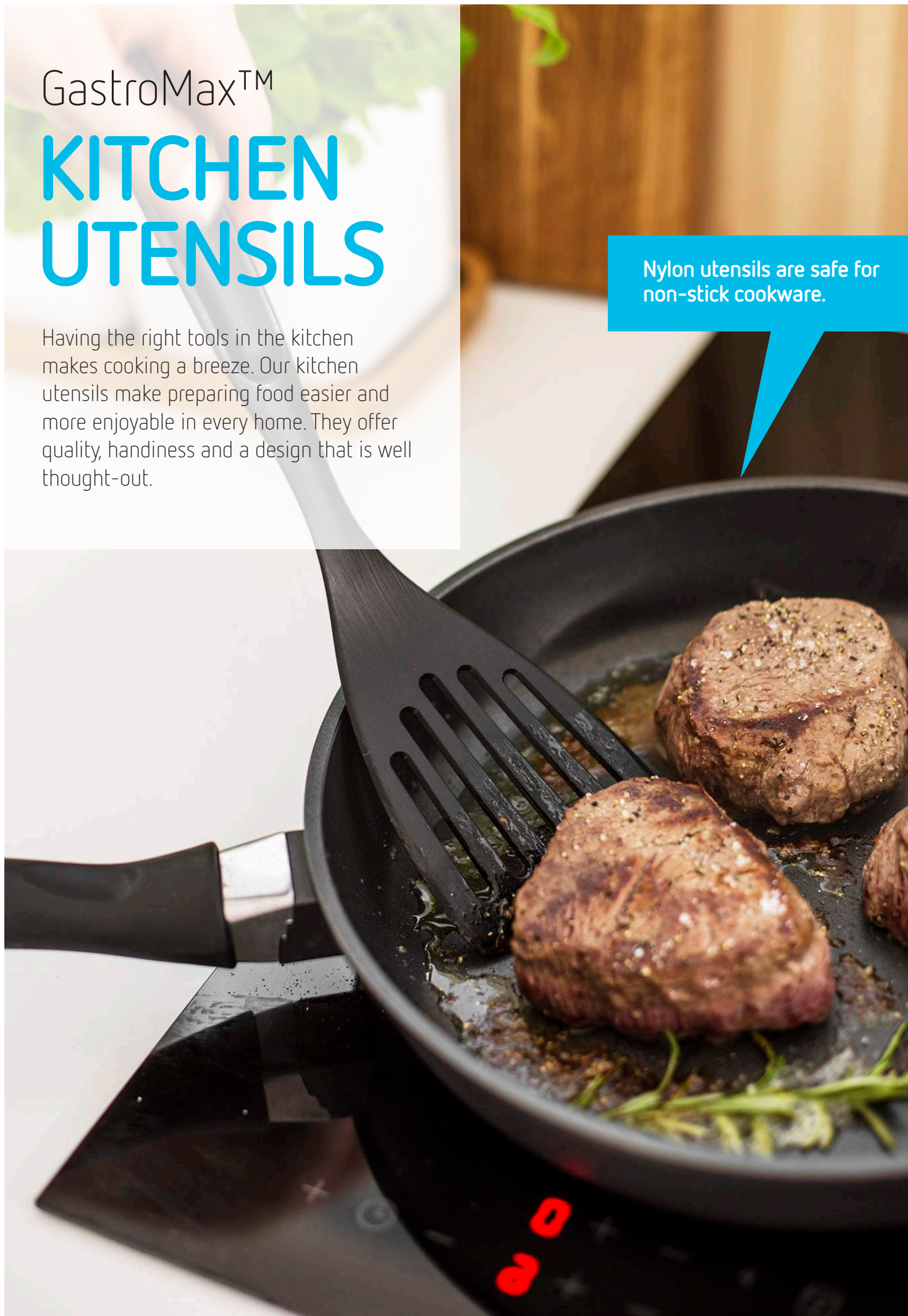


GastroMax™

# KITCHEN UTENSILS

Having the right tools in the kitchen makes cooking a breeze. Our kitchen utensils make preparing food easier and more enjoyable in every home. They offer quality, handiness and a design that is well thought-out.

Nylon utensils are safe for non-stick cookware.



GastroMax™

# KITCHEN UTENSILS

The new modern GastroMax nylon utensils are heat-resistant up to 260 °C, safe for non-stick cookware and easy to clean in the dishwasher.

NEW!



**Soup ladle**

28,5x9,5x9 cm  
6913-1 ●



**Turner**

31,5x6x4 cm  
6914-1 ●



**Slotted turner**

29,5x9x3,5 cm  
6926-1 ●



**Spiral whisk**

28x8x7 cm  
6916-1 ●



**Cooking spoon**

29,5x7,5x4,5 cm  
6911-1 ●



**Cooking tongs**

29x6,5x3,5 cm  
6920-1 ●



**Pasta ladle**

30x7,5x4 cm  
6918-1 ●

Comfortable handles with built-in thumb rests.





GastroMax™

# KITCHEN UTENSILS

Chef's utensils are developed together with Swedish top chef Per Gustafson to ensure excellent functionality.



GastroMax Chef's utensils have a long handle to protect your hands from heat and oil splashes.



Sturdy  
serving  
tools for rich  
salads, pasta  
dishes and  
more.

## Chef's serving tools

34,5x11,5x3,5 cm

6824-7 ●



## Chef's colander spoon

36,5x11,5x6 cm

6812-7 ●



## Chef's turner

34x9x4 cm

6814-7 ●



## Chef's wok spoon

34x9,5x4 cm

6823-7 ●



## Chef's cooking tongs

31x8x7,5 cm

6820-7 ●



## Chef's whisk

35x11x6 cm

6816-7 ●



Slices all types  
of cheese. The  
sharp edge can  
be used for  
cutting cheese.

## Cheese slicer

20,5x7,5x2 cm

6530-1 ●



## Cooking fork

28,5x3,5x2,5 cm

6515-1 ●



Whips plenty  
of air into  
cream or  
batter.

## Balloon whisk

30x6,5x6,5 cm

6931-1 ●



A firm grip  
for lifting e.g.  
a steak. Tips  
can be used to  
spoon liquid  
over food while  
cooking.

## Cooking tongs

27x7x3,5 cm

6535-1 ●



Grooved tips  
for a secure  
hold on foods  
as you turn or  
lift them.

## Cooking tongs

28,5x5,5x1,5 cm

6520-1 ●



Cuts cakes and  
pies without  
damaging non-  
stick bakeware.  
Balanced to keep  
the blade off the  
table.

## Pie server

27,5x5,5x4 cm

6540-1 ●

GastroMax™

# KITCHEN UTENSILS

The new GastroMax BIO range's plastic is made from 98% renewable material, a unique mix of sugarcane and wood fiber from Nordic spruce. It combines the natural look and feel of wood with the functional benefits of plastic.

NEW!

Made of bio-based plastic.



**Cutting board 25x15 cm BIO**

25x15x0,6 cm

132700 ●



**Cutting board 30x20,5 cm BIO**

30x20,5x0,6 cm

135700 ●



**Cutting board 35x25 cm BIO**

35x25x0,6 cm

133700 ●



GastroMax™

# KITCHEN UTENSILS



**Potato  
masher BIO**  
7x10x32 cm  
7245-90 ●



**Cheese  
slicer BIO**  
1,5x7,5x28 cm  
7248-90 ●



**Butter  
spreader BIO**  
1,5x7x28,5 cm  
7200-90 ●



**Peeler BIO**  
1,5x7x25 cm  
7230-90 ●



**Can opener BIO**  
1,5x7x23 cm  
7261-90 ●



**Turner BIO**  
1,5x7x35,5 cm  
7258-90 ●

The products have an up to 80 %  
reduced carbon footprint.



GastroMax™

# KITCHEN UTENSILS

These classic GastroMax utensils with steel blades are practical and long-lasting products for everyday use.

The blades are made of stainless steel.

The classic utensils have been updated with new modern handles.

Classic model.

Great for slicing soft to semi-hard cheese. The short blade prevents cheese from sticking.

**Cheese slicer**  
21,5x7,5x1,5 cm  
7048-1 ●

**Soft cheese slicer**  
17,5x7,5x1,5 cm  
7049-1 ●



**Turner**  
29x5x2,5 cm  
7058-1 ●



**Potato masher**  
25,5x10x7 cm  
7045-1 ●



**Spiral whisk**  
28x8x5,5 cm  
7151-1 ●



**Apple corer**  
20x1,5x1,5 cm  
7066-1 ●



**Paring knife**  
16,5x2x1,5 cm  
7053-1 ●



**Peeler**  
18,5x2,5x1,5 cm  
7030-1 ●



**Bottle opener**  
15x4x1,5 cm  
7010-1 ●



**Can opener**  
15x3x1,5 cm  
7161-1 ●



**Pie server**  
25x5,5x3 cm  
7067-1 ●



**Butter spreader**  
21,5x3x1,5 cm  
7100-1 ●



**Pizza slicer**  
19x6,5x1,5 cm  
7069-1 ●

Easily cuts both thin and thick crust. A non-stick coating on the wheel prevents cheese from sticking. Safe to use on non-stick pans.



GastroMax™

# KITCHEN UTENSILS

The GastroMax knives have ergonomic handles with non-slip surface and top quality stainless steel blades.



**Paring knife**  
20x3x2 cm  
6709-1 ●



**Cheese knife**  
24x3x2cm  
6710-1 ●



**Santoku knife**  
31x5x2 cm  
6708-1 ●



**Bread knife**  
34x4x2 cm  
6705-1 ●



**Carving knife**  
34x4x2 cm  
6706-1 ●



**Chef's knife**  
34x4x2 cm  
6707-1 ●



**Honing steel**  
32x3,5x2,5 cm  
7350-1 ●



**Knife sharpener**  
16,5x6x6 cm  
7351 ●

An easy-to-use ceramic roll sharpener and diamond stone for dull knives and scissors.



**Cutting board 25x15 cm**  
25x15x0,6 cm  
13291 ○ 132039 ●



**Cutting board 30x20,5 cm**  
30x20,5x0,6 cm  
13591 ○ 135039 ●



**Cutting board 35x25 cm**  
35x25x0,6 cm  
13391 ○ 133039 ●

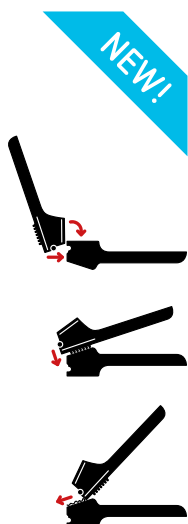


**Cutting board 45x28,5 cm**  
45x28,5x0,8 cm  
13491 ○ 134039 ●

GastroMax™

# KITCHEN UTENSILS

The new GastroMax garlic press separates into two pieces for easy cleaning. It easily minces both peeled and unpeeled garlic cloves.



Separates into  
two pieces for  
easy cleaning

**Garlic press**  
23x7x5 cm  
6903-1 ●

Excellent for par-  
mesan and other  
hard cheeses, 1,5 dl  
container.



**Mini grater with  
container**  
15x7x4 cm  
912200 ●

Wire-  
strengthened  
model.



**Grater**  
20x12x9,5 cm  
911940 ○



**Zester grater**  
33,5x3,5x2,5 cm  
6691 ●



**Rotary grater**  
30x23x9,5 cm  
6685 ○



**Paddle grater**  
25x12,5x2,5 cm  
7036-1 ●



GastroMax™

# KITCHEN UTENSILS

Vegetarian food is in demand. GastroMax peelers and slicers with their extra sharp stainless steel blades make easy work of preparing vegetables. All the products are dishwasher proof for easy cleaning.



A swivel blade follows the contour of vegetables and fruits.

## Peeler

16x2,5x1,5 cm  
6034-1 ●



The razor-sharp swivel blade easily peels e.g. tomato, kiwi or asparagus.

## Peeler

18x2,5x2,5 cm  
7401-1 ●



## Y-Peeler

18x7x2,5 cm  
6901-1 ●



## Julienne peeler

18x7x2,5 cm  
6902-1 ●



## Mandoline slicer

30x12x4,5 cm  
6695 ●



## Apple slicer

19,5x13,5x4,5 cm  
6755 ○



NEW!

## Spiral cutter

14x7x7 cm  
6756 ○



## Mushroom knife

19,5x2x1,5 cm  
7052-1 ●



## Egg slicer/wedger

22x8,5x4,5 cm  
6086-1 ●



## Egg slicer

13x9x2,5 cm  
6085-1 ●



## Onion chopper

12,5x12,5x9,5 cm  
6690 ○



Two blades for coarse or fine texture.

## Potato/vegetable ricer

33,5x11,5x10 cm  
6601 ●

GastroMax™

# KITCHEN UTENSILS



**Coffee filter**

12x12x10 cm

41310 ○



**Coffee measure**

7x3,5x21cm

6542-2 ○



**Tea ball infuser**

15x4,5x3,5 cm

2339 ●



Sharp metal wire for precise slicing and cutting. Thick and thin slice options.

**Wire cheese slicer**

24,5x2,5x1,5 cm

7405-1 ●



**Spare wires**

25x0,1x0,1 cm

7406 ○



**Meat tenderiser**

27x9x4,5 cm

2132 ●



**Ceramic hob scraper**

13,5x5x2 cm

2371 ●



**Blades for ceramic hob scraper**

4,5x2,5x0,1 cm

2471 ●



Cuts both paper and fabric, soft grip handles.

**Scissors**

23,5x8,5x1 cm

6340-1 ●



**Scissors**

18x6,5x1 cm

6341-1 ●



**Nutcracker**

15,5x3,5x1,5 cm

2334 ●

Safe and easy to use, broken shell pieces remain inside the nutcracker.



**Nutcracker display**

18,5x7x5,5 cm

848127 ○ ● ●



**Corkscrew with wings**

17x6,5x3,5 cm

2336 ●



**Waiter's friend**

12x2,5x1,5 cm

2343 ●



**Can opener**

9x3x1,5 cm

6160 ●



**Can opener**

19x5,5x5 cm

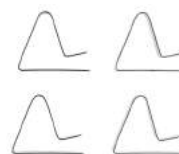
2337 ●



**Corncob skewers**

8,5x2x2 cm

2346 ●



**Table cloth clip 4 pcs**

5x4,5x1 cm

913860 ○



GastroMax™

# KITCHEN UTENSILS

Counts down and up 59 min 59 sec. Foldable stand and magnet on the back.



## Kitchen timer

8x8x1,5 cm

6669-1 ●

Counts down and up 59 min 59 sec. Meat thermometer can be set to max 250°C.



## Meat thermometer / timer

8x8x1,5 cm

6692-1 ●

Connect with your smartphone or tablet – the app alarms when the food reaches the wanted temperature.



## Kitchen thermometer with app

13x10x3 cm

6696 ●



## Splatter screen ø 29 cm

46x29x0,5 cm

2347 ○

Optimal temperature zones marked for various types of meat.



## Meat thermometer

7,3x11,5 cm

6751 ●



## Steak thermometer 4 pcs

2,5x6 cm

6753 ●



## Digital meat thermometer

28x2,7x0,5 cm

6697-1 ●

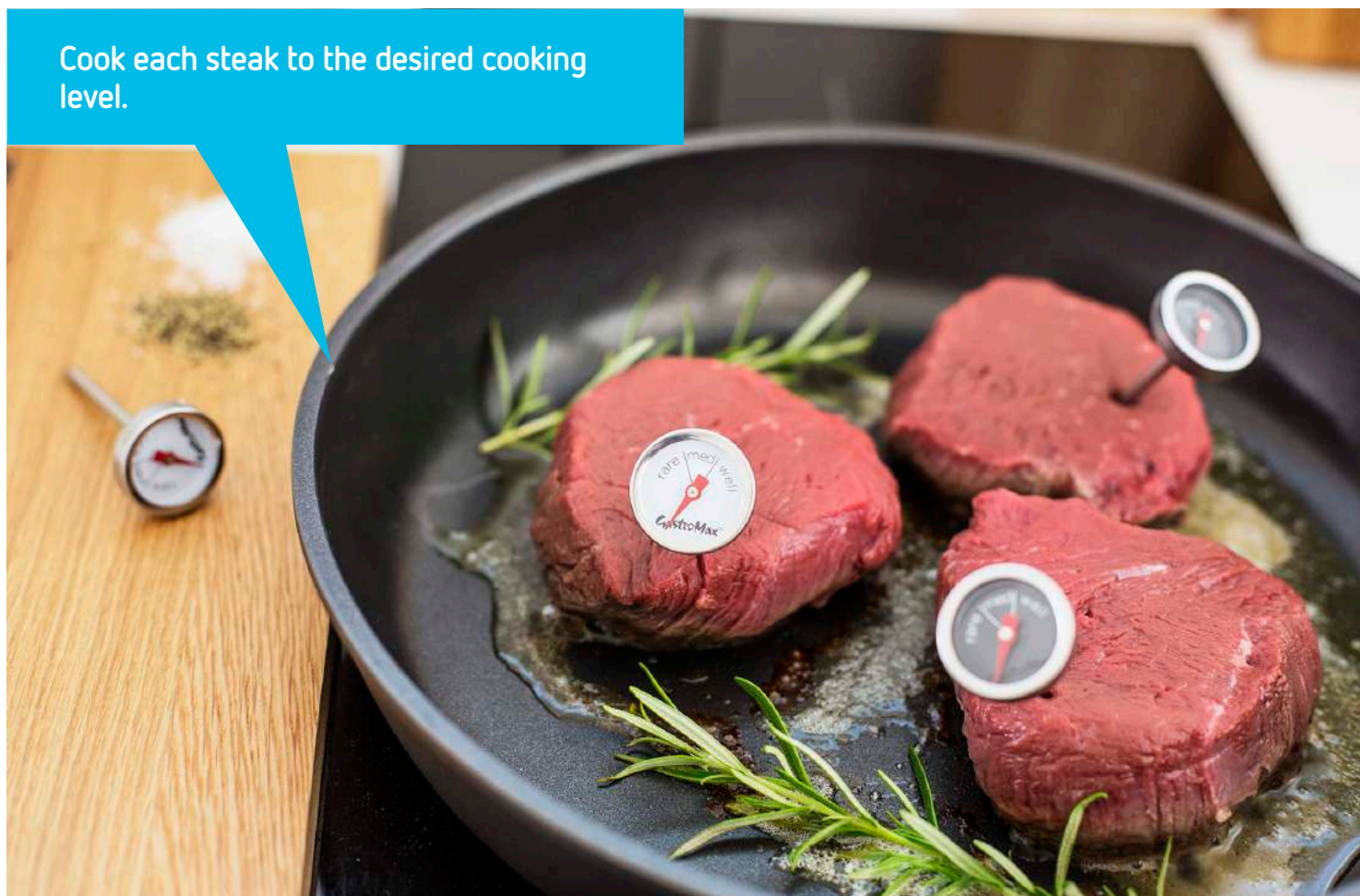


## Testing skewer

14,5x2x0,5 cm

6131-1 ●

Cook each steak to the desired cooking level.



GastroMax™

# KITCHEN UTENSILS



**Ladle 22 cm**

22x6x3 cm

12010 120039 120064



**Ladle 27 cm**

27x7x4 cm

12110 121039 12164



**Ladle 30 cm**

30x7x4 cm

12210 122039 12264



**Funnel ø 13 cm**

13x15,5x13 cm

15910 ○



**Micro cover**

25x26x8 cm

23191 ○



**Ice cream scoop**

18x4,5x3 cm

6541-1 ●

Patterned  
surface  
ensures easy  
release of a  
scoop.



Traditional ladle for both cooking and serving.



**Colander**

40x24x13 cm

1295110 ○



**Strainer ø 19 cm**

34x19x8,5 cm

5619-1 ●



**Strainer ø 15 cm**

29,5x15x7 cm

5615-1 ●



**Strainer ø 8 cm**

17x8x4 cm

5608-1 ●

Footed base for sta-  
bility and keeping  
contents clear of  
countertops. Sturdy  
handle has a hole  
for hanging.



**Storage pail with lid 3 L**

19x20x18 cm

153039 ○



**Storage pail with lid 5 L**

21x23x21 cm

312039 ○



**Storage pail with lid 10 L**

30x32x22cm

313039 ○



**Storage bin with lid 30 L**

41x48x36 cm

35710 ○



GastroMax™

# KITCHEN UTENSILS

Cutlery trays and drainers are kitchen essentials. The GastroMax cutlery trays keep cutlery and utensils organized and quickly accessible in the kitchen drawer. We offer several models to fit a variety of drawer sizes and storage needs.



Plastic drainers are dishwasher proof and easy to clean.



**Cutlery tray large**

41x31x5 cm

22010 ○ 22064 ●



**Cutlery tray small**

33x23x5 cm

22110 ○ 22164 ●



Rounded  
corners for  
easy cleaning.

**Reda cutlery tray**

33x22x5 cm

6905010 ○



**Reda cutlery tray**

51x33x5 cm

6904010 ○



**Reda cutlery tray**

51x34x6 cm

6907010 ○



**Torka cutlery drainer**

10x10x12 cm

1216010 ○ 1216150 ●



**Torka dishdrainer**

48x39x11 cm

1221010 ○



**Torka drip tray**

43x38x4 cm

1222010 ○



With com-  
partments  
to easily sort  
cutlery whilst  
drying.

**Cutlery drainer round**

13x13x11 cm

22310 ○ 22364 ●

GastroMax™

# POTS & PANS

Good food is the spice of life, and cooking it is half the pleasure. GastroMax cookware will help to make your meal a success. The pots and pans distribute heat evenly and many are equipped with a practical non-stick coating.



The GastroMax pots and pans are suitable for all cookers, including induction.



# GastroMax™

## POTS & PANS

This cookware range is made of hardwearing stainless steel. The pots are equipped with capacity markings and glass lids. The frying pans are ovenproof up to 200°C and their highly durable Teflon Platinum Plus non-stick coating withstands metal kitchen utensils.



**Roasting pan 5 L**  
25x35x7 cm  
6750 ○



The stainless steel frying pans are ovenproof.



**Sauce pan 1 L**  
31x15,5x9 cm  
6732 ○



**Sauce pan 2 L**  
35,5x19,5x11 cm  
6733 ○



**Sauce pot 3 L**  
28x22,5x12 cm  
6735 ○



**Sauce pot 4 L**  
30x22x12 cm  
6734 ○



**Frying pan Ø 26 cm**  
48x28x8 cm  
6730 ○



**Frying pan Ø 28 cm**  
50x29x10 cm  
6731 ○

# GastroMax™ POTS & PANS

These pots and pans are made of die cast aluminium that conducts heat efficiently. Thick base helps prevent food from sticking. Teflon Classic non-stick coating enables healthy cooking with little or no fat.

NEW!



Use of GastroMax nylon utensils makes non-stick cookware last longer.



**Saucepan 1,8 L**  
35x17,5x9,5 cm  
6745 ●



**Sauce pot 4,5 L**  
32x25,5x15 cm  
6747 ●



**Sauté pan  
Ø 28cm**  
51x29,5x12 cm  
6743 ●



**Frying pan  
Ø 20 cm**  
44x22x8 cm  
6740 ●



**Frying pan  
Ø 26 cm**  
48x28x8 cm  
6741 ●



**Frying pan  
Ø 28 cm**  
51x30x9 cm  
6742 ●



# GastroMax™ BAKING

Everyone loves baking or at least eating buns, pies and cakes. Practical tools make baking a pleasure. Add good ingredients and a pinch of love, and you have a recipe of success.



Springform pans have removable sides, which helps keep delicate cakes intact while removing them from the pan.



# GastroMax™

## BAKING

The non-stick baking pans are made of carbon steel and have two layers of non-stick coating for easy cake release.



**Springform pan  
2 bases 2,2 L**  
24,5x24,5x8,5 cm  
8512 ●



**Springform pan  
heart 2,1 L**  
22,5x21x7 cm  
8518 ●



**Springform pie pan  
ø 28 cm**  
28x28x3 cm  
8519 ●



**Mini loaf pan 8 cup**  
4x24x36 cm  
8544 ●

NEW!



**Muffin pan 12 cup**  
34x26x3 cm  
8505, ø 7 cm ●



**Bun pan 1,8 L**  
22,5x22,5x11,5 cm  
8503 ●



**Springform pan 2,2 L**  
24x24x7 cm  
8511 ●



**Springform pan  
ø 11,5 cm**  
12x12x4,5 cm  
8523 ●



**Lasagna pan 3 L**  
36x25x5 cm  
8514 ●



**Roasting pan  
2 pcs**  
36,5x35x5,5 cm  
8540 ●



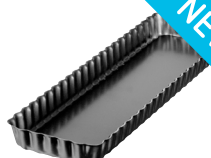
**Loaf pan 1,3 L**  
29x12x7 cm  
8509 ●



**Loaf pan 1,7 L**  
33x13x6,5 cm  
8510 ●



**Pizza crisper**  
2x33x37 cm  
8543 ●



**Quiche pan with  
removable base**  
2,7x11x36 cm  
8545 ●



**Baguette pan**  
37x16,5x2,5 cm  
8521 ●



**Tartlet pan  
4 pcs ø 10 cm**  
10x10x2,5 cm  
8520 ●

NEW!

NEW!





# GastroMax™ BAKING



**Tinplate  
bundt pan 1,5 L**  
22,5x22,5x12 cm  
6788 ●

NEW!



**Tinplate  
springform pan 3 L**  
27,5x28x6,5 cm  
6787 ●

NEW!



**Tinplate  
loaf pan 1,7 L**  
12x31x7,5 cm  
6789 ●

NEW!



**Tinplate  
pie pan ø 27 cm**  
27,5x27,5x3 cm  
6790 ●

NEW!



**Tartlet  
tin heart**  
7,5x7,5x1,5 cm  
926060 ○ set of 6



**Tartlet tin round**  
6,5x6,5x2 cm  
934660 ○ set of 6



**Tartlet tin oval**  
8x5x2,5 cm  
934760 ○ set of 6



The popular tinplate pans are durable and possess excellent baking qualities.

# GastroMax™

## BAKING

100% natural fibre bristles



**Pastry wheel**  
15,5x4x1,5 cm  
7115-1 ●



**Brush silicone**  
24,5x4,5x1,5 cm  
6537-1 ○



**Brush**  
19x4x0,5 cm  
6521-1 ●



**Pastry brush**  
15,5x3,5x0,5 cm  
2150 ●



**Brush silicone**  
20,5x4x1 cm  
2368-3 ●



**Spatula silicone**  
23,5x5x1 cm  
2369-3 ●



**Spatula silicone**  
28x5x1 cm  
6524-1 ●



Non-stick coating prevents dough, caramel colour and grease from sticking.

**Rolling pin non-stick**  
47,5x6x6 cm  
2374 ○



**Rolling pin**  
44x6,5x6,5 cm  
2383 ●



**Measuring cup set 4 pcs**  
12x6,5x4 cm  
2373 ●



**Dough scraper**  
13,5x8,5x1,5 cm  
6075-1 ●

Replaces traditional baking paper. Can be reused up to 100 times on both sides.



**Baking paper**  
48x41x0,1 cm  
6693 ●



**Almond grinder**  
22x8,5x6 cm  
6351 ●





# GastroMax™

## BAKING



**Dough rising basket round**

22x22x8 cm

6688 ●



**Dough rising basket oval**

34x13,5x7 cm

6689 ●

Plastic lined washable piping bag is easy to use and clean. Set includes 3 nozzles.



**Piping set**

19x11x4 cm

6603 ○



**Piping set**

11x10x4 cm

2344 ○



The mixing bowls have non-drip spouts and wide rims for easy grip.



**Mixing bowl 2,5 L**

24x22x13 cm

20210 ○



**Mixing bowl 3 pcs**

24x24x17 cm

7078110 ○



**Mixing bowl 3,5 L**

27x24x14 cm

20310 ○



**Mixing bowl 1,5 L**

20x16x13 cm

7073110 ○



**Mixing bowl 2 L**

21x18x15 cm

7074110 ○



**Mixing bowl 3 L**

24x20x16 cm

7075110 ○



**Dough bowl 8 L**

35x31x18 cm

7076110 ○

Long handles to easily scoop from tall jars. The spoons snap together and can easily be taken apart for use.



**Measuring spoon set 5 pcs**

7x19x5 cm

6404-90 ○



**Measuring cup 0,3 L**

10x10x8 cm

6405-90 ○

Can be used with a hand blender.



**Measuring cup 0,5 L**

10x10x12 cm

6406-90 ○



**Measuring cup 1 L**

12x17x15 cm

6407-90 ○



**Citrus press 0,3 L**

10x11x13 cm

6408-90 ○

# GastroMax™

## BAKING

The stainless steel cookie cutters have sharp edges that make it easy to cut out figures from cookie dough or bread.



**Cutter heart**  
4x4x1,5 cm  
939101-1



**Cutter star**  
4x4x1,5 cm  
939102-1



**Cutter pig**  
3x5,5x1,5 cm  
939107-1



**Cutter horse**  
4,5x4,5x1,5 cm  
939110-1



**Cutter heart**  
5,5x5,5x1,5 cm  
939201-1



**Cutter star**  
6x6x1,5 cm  
939202-1



**Cutter house**  
7x7x1,5 cm  
939450-1



**Cutter heart**  
7,5x7,5x1,5 cm  
939301-1



**Cutter star**  
8x8x1,5 cm  
939302-1



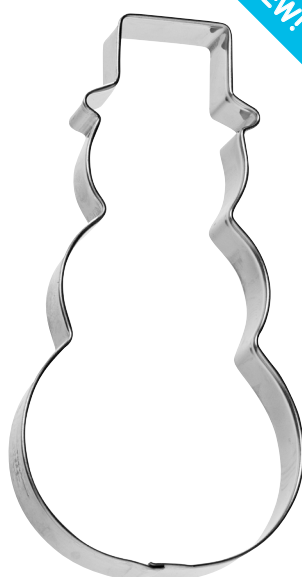
**Cutter ginger bread**  
8x8x1,5 cm  
939304-1



**Cutter cat**  
8,5x6x1,5 cm  
939327-1



**Cutter lamb**  
6x7,5x1,5 cm  
939351-1



**Cutter Christmas gnome**  
6x11,5x1,5 cm  
939473-1



**Cutter Christmas stocking**  
8x9x1,5 cm  
939469-1



**Cutter angel**  
6,5x10x1,5 cm  
939424-1



**Cutter heart**  
9x9x1,5 cm  
939401-1



**Cutter snowflake**  
9x9x1,5 cm  
939387-1



**Cutter star**  
10,5x10,5x1,5 cm  
939402-1



All the cutters are dishwasher proof.



# GastroMax™

## BAKING



**Cutter t-rex**

4,5x11,5x1,5 cm  
939420-1



**Cutter dino**

4,5x11x1,5 cm  
939421-1



**Cutter pig**

5x10,5x1,5 cm  
939407-1



**Cutter horse**

9,5x8x1,5 cm  
939410-1



**Cutter X-mas tree**

11x6x1,5 cm  
939408-1



**Cutter man**

11x7x1,5 cm  
939405-1



**Cutter woman**

10,5x7x1,5 cm  
939406-1



**Cutter dog**

8x11x1,5 cm  
939427-1



**Cutter rabbit**

10x5,5x1,5 cm  
939433-1



**Cutter moose**

8x8,5x1,5 cm  
939440-1



**Cutter bell**

10x8x1,5 cm  
939425-1



**Cutter heart**

14x15x2 cm  
939601-1



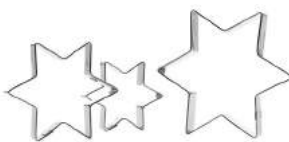
**Cutter heart**

18,5x20,5x2 cm  
939701-1



**Cutter set of hearts 3 pcs**

6, 8 cm & 11 cm  
939801



**Cutter set of stars 3 pcs**

6, 8 & 11 cm  
939802



**Cutter set traditional 5 pcs**

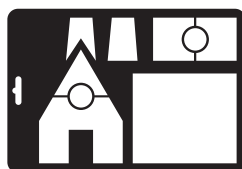
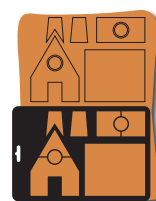
8 & 11 cm  
939851



**Cutter set Christmas 5 pcs**

8, 11 cm  
939967

The 3D cookie cutters make it easy to build a gingerbread village! With just two cuts from the dough, you will get all the parts for a complete house or four Christmas trees.



**Cutter gingerbread house**

28,5x19,5x1,5 cm  
939870 ●

**Cutter Christmas trees**

28,5x19,5x1,5 cm  
939952-1 ●

# GastroMax™ TABLEWARE

Practical and elegant plastic is lightweight, hygienic and robust and therefore an excellent material for picnics, barbeques, camping and eating outdoors.



Light bowls and plates come in many sizes. Easy to clean and easy to carry. Perfect for a meal in the garden.



# GastroMax™

## TABLEWARE



**Bowl 0,4 L**

13x13x6 cm  
16491 ○



**Bowl 0,75 L**

15x15x8 cm  
17491 ○



**Bowl 3,5 L**

25x25x11 cm  
15891 ○



**Bowl 7 L**

32x32x14 cm  
16891 ○



**Bowl 7 L**

32x32x14 cm  
16890 (SAN) ○



**Coffee mug**

**0,3 l** 8x11x10 cm  
15591 ○



**Drinking glass**

**0,4 l** 9x9x10 cm  
15491 ○



**Plate ø 23,5 cm**

23,5x23,5x5 cm  
15791 ○



**Plate ø 17,5 cm**

17,5x17,5x3 cm  
14491 ○



**Mug 0,3 L**

8x10x9 cm  
16310 ○ 163039 ●



**Plate, deep  
ø 19,5 cm**

19,5x19,5x5 cm  
18810 ○ 188039 ●



**Plate, deep  
ø 22 cm**

22x22x3,5 cm  
16710 ○ 167039 ●



**Plate ø 25 cm**

25x25x2 cm  
16610 ○ 166039 ●



**Cake tray**

35x35x2 cm  
26510 ○



**Pitcher 1,5 L**

17x11x22 cm  
18190 ○



**Pitcher 2 L**

22x11x24 cm  
15691 ○

Fits in the fridge door.  
Depending on the  
direction the lid is put  
on, it is either open or  
closed.



**Cake cover portable**

33x37x16 cm  
26210 ○



**Cake cover**

28x29x10 cm  
26490 ○



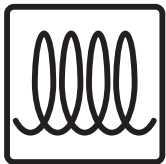


# GastroMax™

# KITCHEN

## Our product symbols

Use and care instructions are clearly communicated with symbols in the product packages of GastroMax kitchen products.



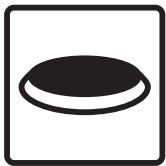
Suitable for  
induction stove



Safe for food  
contact



Dishwasher proof



Suitable for  
electric stove

**BPA  
FREE**

Free from  
bisphenol-a (bpa)



Handwash  
recommended



Suitable for gas  
stove

**MAX  
+260°**

Maximum use  
temperature



Freezer proof



Suitable for  
ceramic stove

**+230°  
-40°**

Maximum and  
minimum use  
temperature



Microwave proof



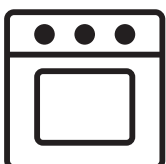
Suitable for  
halogen stove



Type of plastic,  
important  
information for  
recycling



May not be  
used as a  
trivet



Ovenproof



Made in Finland

# GastroMax™ IN-STORE

GastroMax offers inspiring material for stores to boost sales. We have planograms optimized for different size and type stores, floor and counter displays and a range of POS materials to give both information and inspiration to shoppers.



98 % BIO-BASED  
MATERIAL  
Wood fiber and sugarcane



GastroMax Bio products  
are made in Finland  
and Sweden.  
[www.orthexgroup.com](http://www.orthexgroup.com)





# GastroMax™ IN-STORE

Make it easy for shoppers to find the right product. We can customize planograms to serve your specific needs.

## GastroMax™ orthex™



A well-organized shelf drives increased sales.

Top signs are available with or without led lighting.



# GastroMax™ IN-STORE

Ready-to-sell floor and counter displays create additional sales in a limited space.





# GastroMax™ IN-STORE

Consumer packages highlight product features and benefits.



POS materials such as posters, shelf speakers and display screens offer additional information.



KITCHEN



CHILDREN



HOME & YARD

## Orthex at your service

Orthex Group is the leading Nordic designer, manufacturer and marketer of household products. We have a mission to make everyday life a little easier and more enjoyable. Our well-known brands are Orthex™, SmartStore™ and GastroMax™



STORAGE



PLANT CARE

## Practical is beautiful

Oy Orthex Finland Ab  
Suomalaistentie 7,  
02270 Espoo, Finland  
Tel. +358 (0)19 329 61

Orthex Sweden AB  
Box 6, SE-362 21, Tingsryd, Sweden  
Tel. +46(0)477-450 00

Orthex Norway AS  
Østre Aker vei 19, NO-0581 Oslo, Norway  
Tel. +47 23 17 04 00

Orthex Denmark A/S  
Amager Strandvej 60-64, DK 2300 Copenhagen, Denmark  
Tel. +45 46 38 09 10

Orthex Deutschland GmbH  
Kurze Mühren 1, DE 20095 Hamburg, Germany  
Tel. + 49 40 3290 1263

[www.orthexgroup.com](http://www.orthexgroup.com)



[www.facebook.com/orthex](https://www.facebook.com/orthex)



[@orthexgroup](https://www.instagram.com/orthexgroup)



[www.pinterest.com/orthexgroup](https://www.pinterest.com/orthexgroup)



[www.youtube.com/orthexgroup](https://www.youtube.com/orthexgroup)

**orthex**  
GROUP